

Why Our Students Choose GSK

Access to exceptional resources and scientists

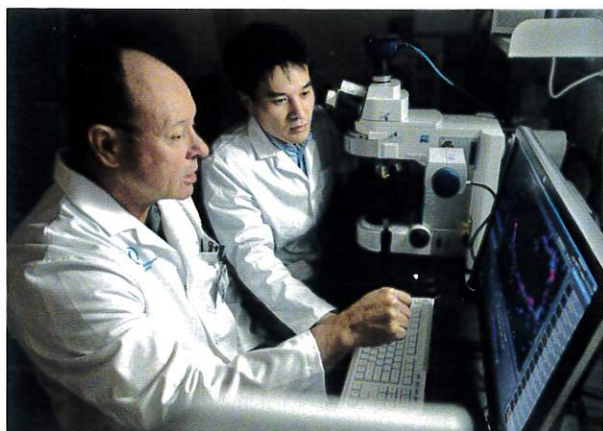
The scientific environment at Sloan Kettering Institute is exceptional for collaborative, translational research, and GSK's core course is well designed to introduce students to the spectrum of work being done at MSK.

— HANNAH HUANG
ALUMNA

A close-knit collegial community

GSK's unique combination of a small, collaborative graduate student community and a much larger biomedical research center makes it a great place to work and learn.

— RYAN SMITH
CURRENT STUDENT



At the nexus of basic science and clinical research

GSK has a great combination of strong labs working in basic sciences as well as clinical research, which helps in bringing the research from bench to bedside.

— SHEFALI KRISHNA
ALUMNA

The opportunity to exploit advances in human biology

For me, deciding on a graduate school was easy — I knew the research environment at GSK would provide me with the best opportunity to do truly meaningful cancer research.

— IVAN COHEN
CURRENT STUDENT

How to Apply

Students who wish to apply should have already completed a baccalaureate degree program at an accredited institution prior to matriculation. Applicants must have completed college-level science and mathematics courses (see the website for a full list). There is no application fee.

Submission of General and Advanced Subject Graduate Record Examination (GRE) scores is optional and not required for admission. Official scores for the Test of English as a Foreign Language exam are required for applicants who do not speak English as their first language (can be waived for applicants who earned their undergraduate degrees in the United States).

Significant basic science research experience is essential. Letters of recommendation from research mentors and written comments from the applicant about prior research work are major components of the selection process.

All applicants to the Gerstner Sloan Kettering Graduate School of Biomedical Sciences are considered on the basis of merit. The school does not discriminate on the basis of gender, race, color, creed, religion, age, national origin, disability, veteran status, marital status, sexual orientation, or citizenship status in accordance with institutional policy and in compliance with the requirements of the Civil Rights Act, the Education Amendments, the Rehabilitation Act, the Age Discrimination Act, and the Americans with Disabilities Act.

Contact Us

Email: gradstudies@sloankettering.edu

Telephone: 646-888-6639

Mailing Address: Louis V. Gerstner, Jr. Graduate School of Biomedical Sciences
1275 York Avenue, Box 441, New York, NY 10065

Twitter: @GSKGradSchool

For more information about our PhD program and to apply online, visit www.sloankettering.edu.



Memorial Sloan Kettering
Cancer Center



PhD Program in Cancer Biology



Gerstner Sloan Kettering
Graduate School of Biomedical Sciences

New York City



A Chance to Solve Challenging Biomedical Problems

Our mission is to train a new generation of scientists who will advance the frontiers of biomedical knowledge and bridge the gap between laboratory research and real-life clinical challenges.

GSK students learn from exposure to current medical challenges and the mentorship of leading scientists who are changing the face of biomedical research.

We hope that you will join us in this extraordinary and exciting environment.

World-Renowned Scientists

Our faculty is composed of more than 120 internationally renowned Memorial Hospital and Sloan Kettering Institute investigators who maintain a strong commitment to training and mentoring the next generation of biomedical scientists.

Many faculty members are physician-scientists, dividing their time between the laboratory bench and the bedside of patients. GSK faculty members have received numerous awards and honors for working at the forefront of biomedical research.

We have created a graduate school that has risen rapidly to become one of the premier training grounds for cancer biology and a model for training biomedical scientists.

— KENNETH MARIANS, DEAN

A Unique and Innovative Program

We target a small class size of 10 to 12 students a year to create an interactive learning experience in the classroom and foster a close-knit community that allows students to build lasting professional bonds with their classmates, GSK faculty, and staff.

The core of the curriculum is completed in the first year as a single, integrated course that takes students from genes and proteins to human pathophysiology.

Students are exposed to cutting-edge research while doing their first-year lab rotations as they choose the lab they would like to join to begin their dissertation research in the second year.

Students also have the opportunity to observe in the clinics at Memorial Sloan Kettering and to choose a clinical mentor.

A Track Record of Success

Since the program enrolled its first class in 2006, our students have published more than 300 papers and competed successfully for independent graduate research fellowships, including those from the National Institutes of Health and the National Science Foundation. Our alumni have pursued postdoctoral training in prestigious academic laboratories and scientist positions in biotech and pharmaceutical companies. Many of these scientists have advanced to principal investigator and leadership positions.

A Thriving Biomedical Research Community

GSK is located on the Upper East Side of Manhattan, in an active community of graduate students, postdocs, medical students, and clinical fellows. MSK also has partnerships with Weill Cornell Medical College and The Rockefeller University and offers several joint graduate training programs as well as professional and career development opportunities.

A Vibrant Place to Live and Study

Students join our program every July. From their first day, GSK students become members of a community of world-class scientists and physicians.

Students participate in weekly journal clubs with their peers to review current topics and present their ongoing research each year in the Graduate Student Seminars.

The GSK Student Council organizes activities throughout the year. Previous events included a weekend ski trip, New York City boat cruise, and bowling night.

All GSK students receive a full scholarship to cover the cost of tuition and fees, along with a monthly stipend. Students are provided affordable housing owned by Memorial Sloan Kettering Cancer Center in the neighborhood.